



## INSTALLATION INSTRUCTIONS

PRO-Pickle Portable Net System

Product #: PROPBS-2



### **PARTS LIST:**

- A - End Coupler Components A & B (2) with hardware – T-Shaped Tubular Steel with Set Screws
- B - Crossmembers (4) – 66” Long Tubular Steel
- C - Cross-Member Couplers (2) – 24” Long Tubular Steel with Set Screws
- D - Center Coupler (1) – 24” Long Tubular Steel with Center Strap Connector and Set Screws
- E - Locking Caster Wheels (5) – Attached to End and Center Couplers
- F - Net Post Uprights w/lacing Rods - Crank Mechanism Attached and Set Screws
- G - Net (1)
- H - Center Strap (1)
- I - Caster Weight Dispersion Plates (5)
- J - Casters (5) with hardware
- K – Net Post Shim Tubes (2)

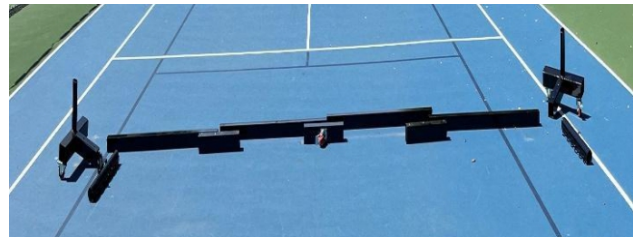
### **TOOLS LIST:**

- 3/16” Allen Wrench for Tightening Set Screws
- Tape Measure
- Philips screw driver

10" Adjustable wrenches (2)

## **FRAME INSTALLATION:**

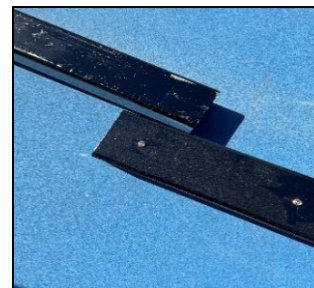
STEP 1: Uncrate and lay out all parts on the court. Care should be taken not to damage the playing surface. See picture 1.



STEP 2: Attach component A and component B (see picture 2A) with the two 3/8" bolts/washers and nuts. Once connected, attach the five (5) casters into the pre-dilled and tapped holes on the bottom side of the couplers with the screws provided.

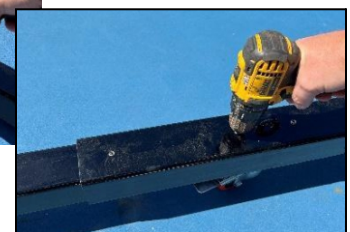


STEP 3: Lock the casters on one of the assembled End Couplers (A). Slide one of the Crossmember (B) all the way into the End Coupler until it cannot go any further. Tighten down both set screws on the top of End Coupler. To save time when assembling the system, a drill with a 3/16" hex bit to tighten up the set screws is helpful. The set screws should be facing up on all couplers.



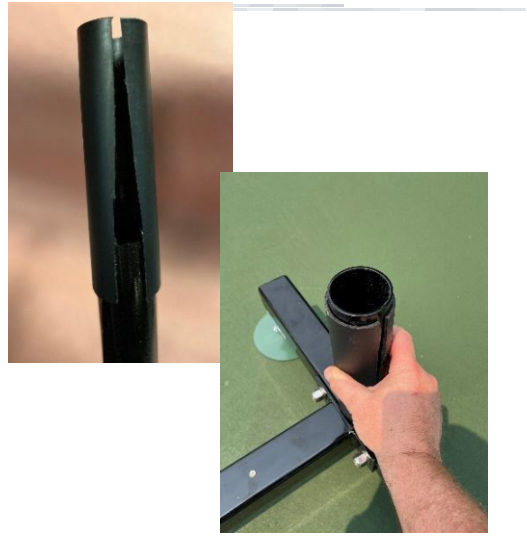
STEP 4: Locate one of the two Cross-Member Couplers (C) and slide it onto the end of the Crossmember you were just handling. Lock down the two set screws on the end that was slid over the crossmember. DO NOT adjust the center set screw as it is a "physical stop" so the couplers slide in to the perfect distance. See picture 3A and 3B.

STEP 5: Insert another Crossmember (B) and slide it into the open end of the previously attached Cross-Member Coupler (C). Tighten down the set screws. Then slide the Center Coupling (D) over the open end of the crossmember. See pictures 4A and 4B.



STEP 6: Continue attaching Crossmembers and Cross-Member Couplings as described previously. After the second End Coupler is attached, the frame should look like picture 5.

STEP 7: Slide on the net post shims included (picture 6A) over the round arm sticking upright from the end coupler and then slide it down the shaft so it is about 1" from the bottom (picture 6B).

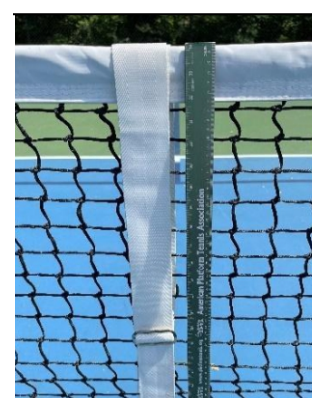
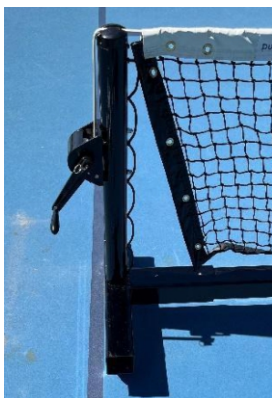


STEP 8: Slide the Net Posts Uprights (F) over the round tubing pointing upward on the two End Couplers (A) and lock down the set screws on both net posts. See pictures 7A and 7B.



Picture 7B

STEP 9: Attach the Net (G) and Center Strap (H). Tighten the net until taut. Then lace the net with rope or ty-wraps. Next, attach the center strap and adjust so that the top of the net sits 34" above the center of the court. See Pictures below.





STEP 10: Lastly, unlock all casters and move the portable net system into place. Always lock down all casters before playing... have fun and enjoy!

**WARNING:** When placing the unit on asphalt, urethane, or cushioned surfaces, always place the weight displacement plates underneath all 5 caster wheels. If the plates are not laid under the wheels, you risk denting or damaging soft surfaces.

For added aesthetic value, the round silver weight displacement plates can be painted to match the out-of-bounds court color.

